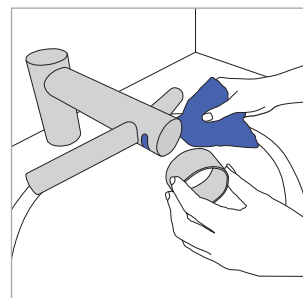


## Cleaning guide

To always get the best performance from the Dyson Airblade Wash+Dry hand dryer, it's important to regularly clean it and check for blockages.

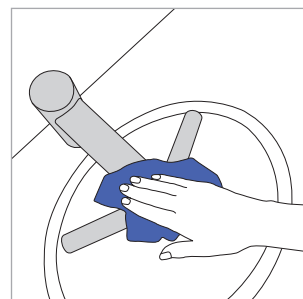
### Clean the sensors

Wipe sensors using a soft cloth and non-abrasive cleaner then place cleaning cap over sensors to prevent activation.



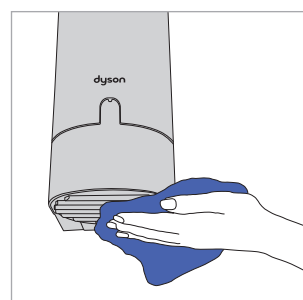
### Clean the machine

Clean all tap surfaces, sink, mirror and any walls or counter tops. When complete REMEMBER to remove cleaning cap.



### Clean and check for blockages

REGULARLY clean air inlets on base of motor bucket (under sink). Ensure plughole in sink is free from blockages so water can drain freely.



### What to use to clean the Dyson Airblade Wash+Dry hand dryer

Important: Do not pressure wash the Dyson Airblade Wash+Dry hand dryer.

#### Types of cleaning

Routine cleaning of light soiling and fingerprints.

Stubborn marks and stains, oil and grease marks.

Water marks.

#### How to clean

A mild detergent applied with a lint-free cloth. Remove detergent residue with a damp cloth and tap water.

A mild detergent, alcohol or Quaternary ammonium solution, diluted to the manufacturer's guidelines. Remove detergent residue with a damp cloth.

Water marks can be avoided by drying with a dry lint-free cloth.

#### Do not use

Solvent/oil-based mixes

Alkali-bleach mixes

Foaming ingredients

Bleach or abrasive cleaners

#### Servicing and support

For more information:

866-236-3884

commercial.sales@dyson.com

www.dysoncanada.ca

For further information about Water supply cleanliness and bacteria growth, please refer to the Owner's manual.