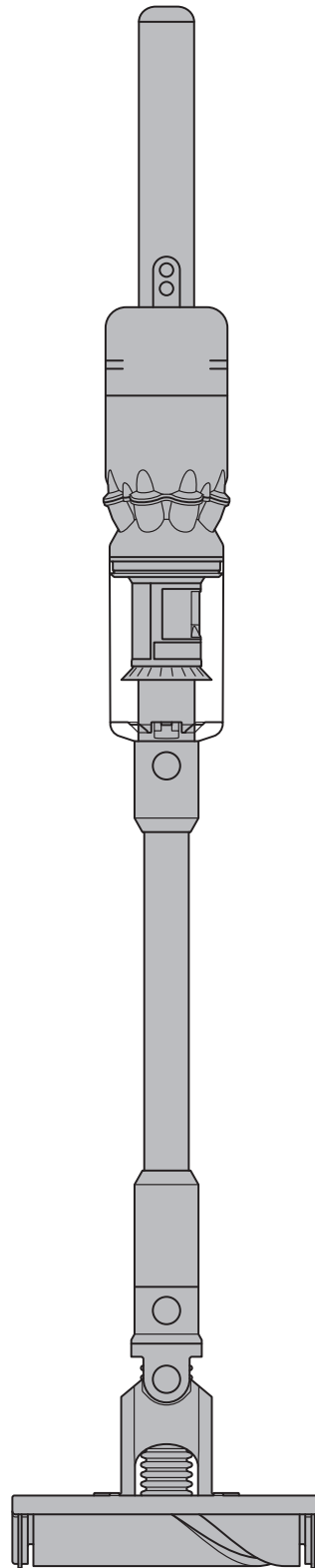




User manual



In the box

Getting started

Charging your machine

Changing your battery

Emptying your bin

Washing your bin

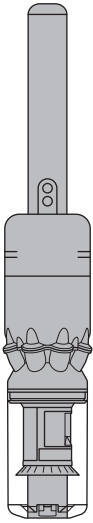
Washing your filter

Washing your brush bars

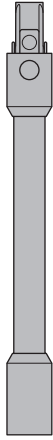
Washing your non-powered tools

Clearing blockages

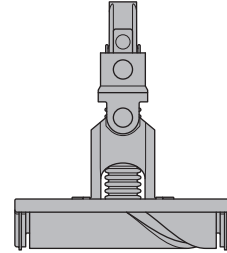
In the box



Vacuum cleaner



Wand



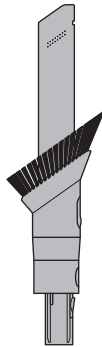
Dyson omnidirectional soft roller cleaner head

Four 360° stabilizing casters allow the cleaner head to glide in all directions, making it easy to navigate around obstacles and clean in tight spaces.



Charger

Charges your vacuum with or without a dock.



Combination tool

Two tools in one – wide nozzle and brush, for quick switching between cleaning and dusting tasks around your home or car.

Getting started



Power button
Easy power selection buttons for simple control and added maneuverability.

MAX

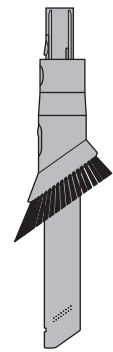
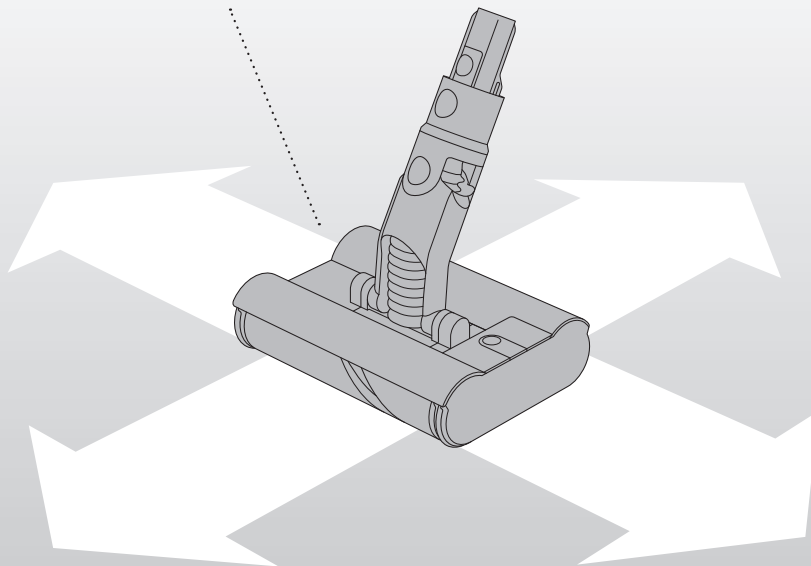


Press the button to change power modes.

Eco mode
The optimum balance of power and run time.

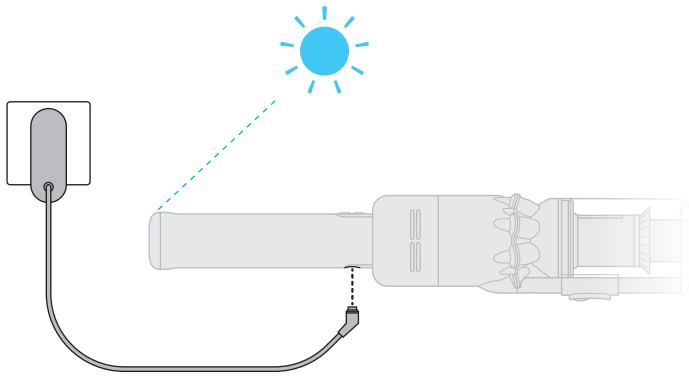
Max mode
Delivers maximum power. For intensive cleaning of ground-in dirt.

Dyson omnidirectional soft roller cleaner head
Four 360° stabilizing casters allow the cleaner head to glide in all directions, making it easy to navigate around obstacles and clean in tight spaces.



Charging your machine

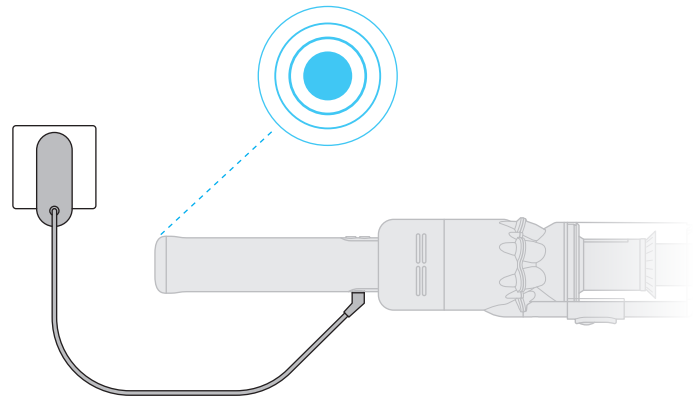
For the best experience, we recommend fully charging your machine as soon as you open the box and after every clean.



The LED light on the end of the handle will flash when the power is running low and to charge your battery.

Charge your machine by either connecting the charger directly to the charging point at the base of the handle of your machine or docking on the docking station.

The LED light on the end of the handle will pulse with a blue LED light when charging, and the light will go out when fully charged.



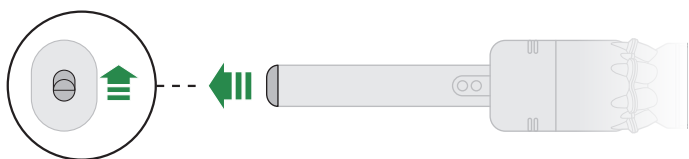
It can take up to 3.5 hours to fully charge your battery. Your battery has been designed to be left on charge.

Your machine won't operate or charge if the ambient temperature is below 5°C (41°F). This is designed to protect both the motor and battery.

You can help prolong the battery life by leaving your machine to cool down before recharging.

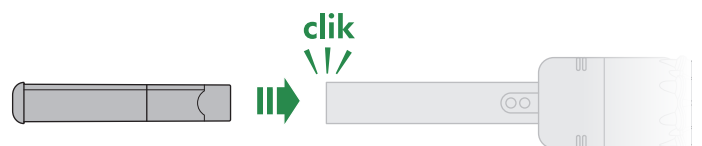
Changing your click-in battery

With the click-in battery, you can have flexible charging anywhere.



Removing your battery

Push up the battery release button on the top of the handle and slide the battery out of the handle. Charge the battery.



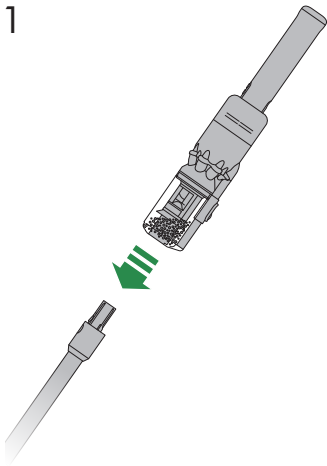
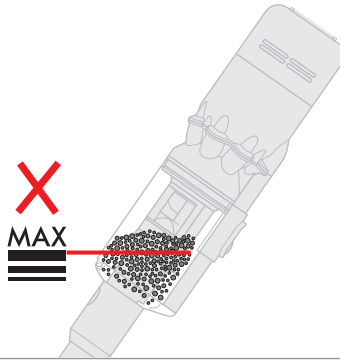
Refitting your battery

Align your battery with the handle and slide it in. Push firmly until it clicks into place.

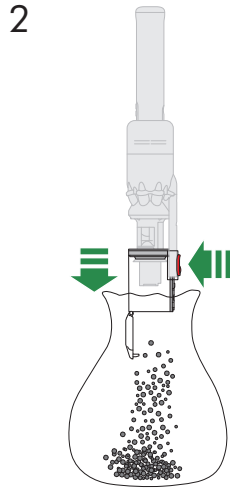
Emptying your bin

Empty your bin as soon as the dirt reaches the MAX mark.

You may need to clean the filter more often if you use your machine with a full bin.



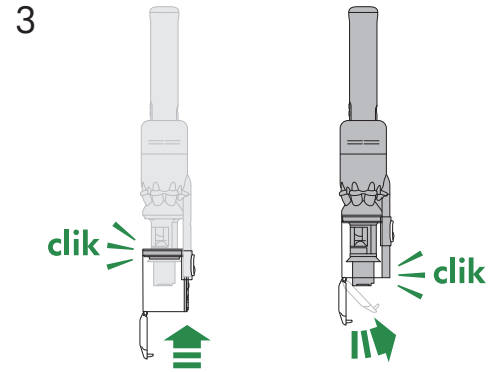
Press the red wand release button and pull the wand away from the bin.



Hold your vacuum over a bin.

Push the red bin release button, taking care not to press the power button. The bottom of the bin will open and the shroud will slide down inside the bin, wiping away any dirt.

If the bin doesn't open, check the bin release button is pushed down fully.

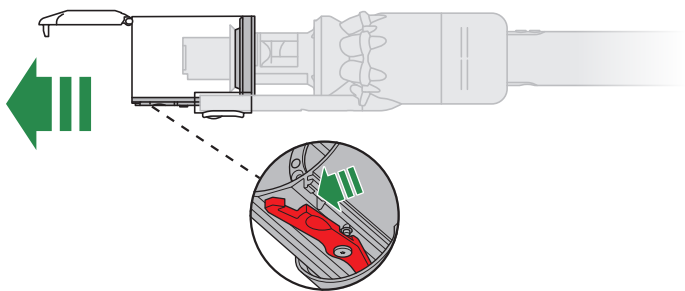


To close the bin, push the bin base upwards until the bin and lid both click into place. Reconnect the wand.

To reduce contact with dust/allergens, put your bin in a dust-proof bag when emptying it. Remove the clear bin carefully and seal the bag tightly.

Reconnect the wand.

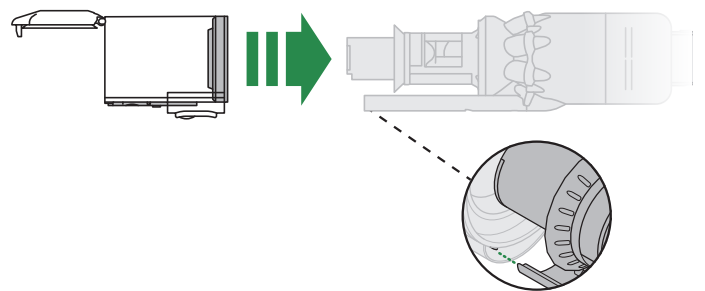
Washing your bin



Don't put any part of your machine in a dishwasher or use detergents, polishes or air fresheners.

Empty your bin before washing it.

Push the red bin release lever on the bin runner and slide the bin off the runner.



Wipe the bin with a damp cloth only.

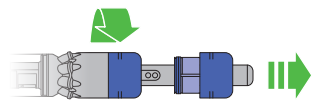
Make sure that all parts of your bin are completely dry before refitting it.

Slide the bin onto the runner.

Washing your filter

Wash your filter at least once a month to maintain the best performance. Make sure the filter is completely dry before refitting.

1



Don't put any part of your machine in a dishwasher or use detergents, polishes or air fresheners.

Turn your filter counter-clockwise and pull it away from your machine.

Before washing your filter, tap it gently over a bin to remove any excess dust and debris.

Wash your filter with cold tap water.

2



Wash the outside of the filter, rubbing with your fingers to remove the dirt.

Place your hand over one end of the filter, fill the filter with water and place your other hand over the open end. Shake to wash the inside of the filter.

Repeat these steps until the water runs clear.

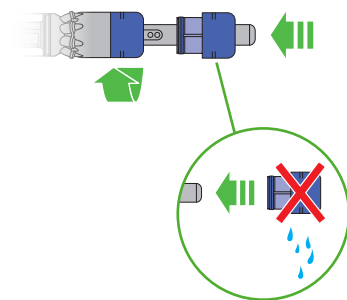
3



Shake to remove any excess water and place it with the filter end up. Leave for at least 24 hrs to dry.

Make sure the filter is completely dry before refitting.

4



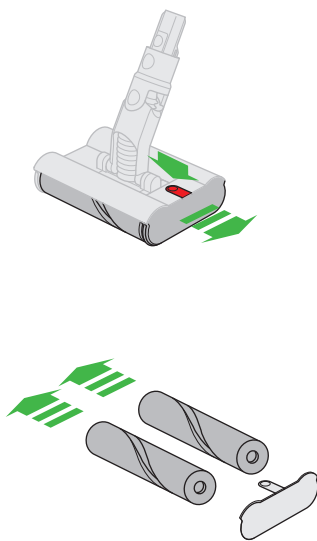
To refit your filter, slide it onto the handle and turn it clockwise until it clicks into place.

Your filter may need more frequent washing if you vacuum fine dust, use Max mode frequently or use with the bin full.

Washing your brush bars

To maintain optimum performance, check and wash your brush bars regularly.

1



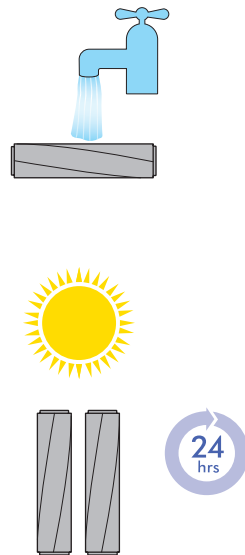
Don't put any part of your machine in a dishwasher or use detergents, polishes or air fresheners.

Press the cleaner head release button to remove it from the wand.

Push the button on top of the cleaner head to release the brush bars. Slide them out of the cleaner head.

Pull the brush bars off the end cap and put the end cap to one side, don't wash it.

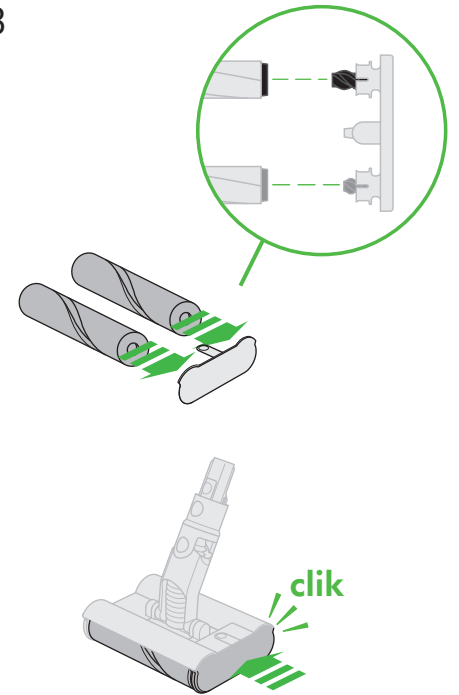
2



Hold your brush bars under cold tap water and gently rub to remove any lint or dirt. Keep washing until the water runs clear.

Stand the brush bars upright and leave for at least 24 hours to dry.

3



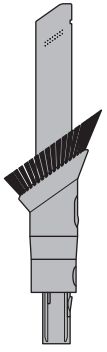
Make sure your brush bars are completely dry before refitting.

Each brush bar is engineered to correspond to a specific position on the end cap. It is important that both brush bars are fitted in the correct position. Slide the assembled brush bars back into the cleaner head.

Push the end cap until it clips securely back into the closed position.

The cleaner head housing is not washable and should only be wiped over with a damp lint-free cloth.

Washing your non-powered tool



Combination tool

Wipe your non-powered tools with a damp cloth only.

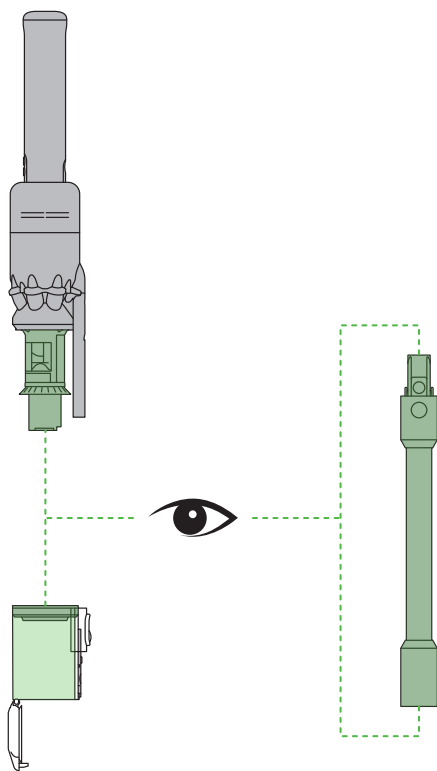
Clearing blockages

If your machine detects a blockage, the motor will pulse six times. You won't be able to use your machine until the blockage has been cleared.

If you try to use your machine when the motor is pulsing, it will automatically cut out.

Leave your machine to cool down before looking for blockages and, for your safety, take care not to touch the power button.

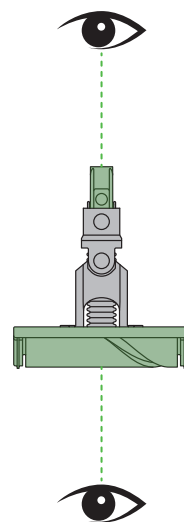
1



Be careful of sharp objects that may be blocking your machine.

Check for blockages in the cleaner head, and if needed, follow the instructions for removing the brush bars. Remove the bin and check for blockages in the main body of your machine.

2



Make sure any blockages are completely cleared and all parts are fitted before using your machine.