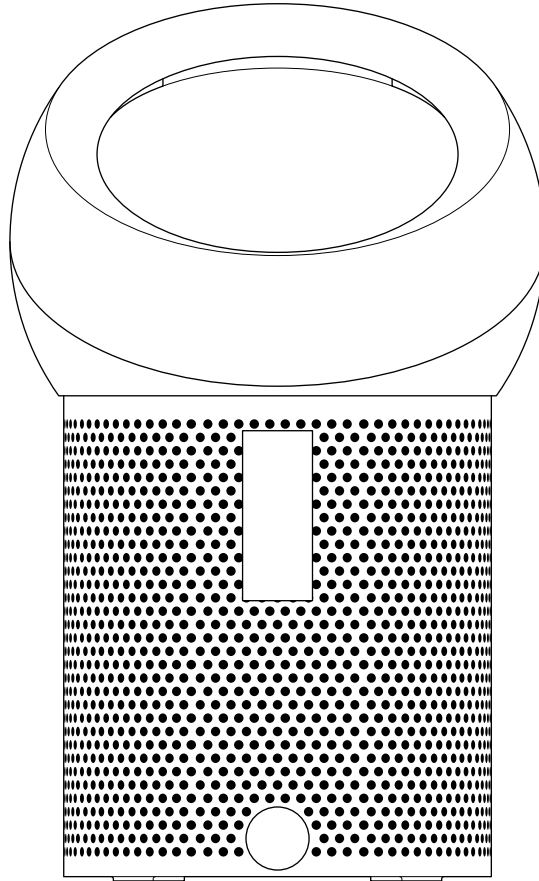


dyson pure coolme

User guide



Contents

- 2 Activate your warranty
- 3 Getting started
- 4 Changing your filter
- 4 Looking after your machine

Thank you for choosing to buy a Dyson personal purifying fan.

Activate your warranty now

We don't stop caring about our machines once they're yours.
Even after your warranty has ended, we'll still be on hand to help.

Exclusive owner benefits

Genuine Dyson parts and labour

Free shipping there and back

Expert advice. Six days a week

'How to' videos and helpful tips

How can we help?

Solve a problem

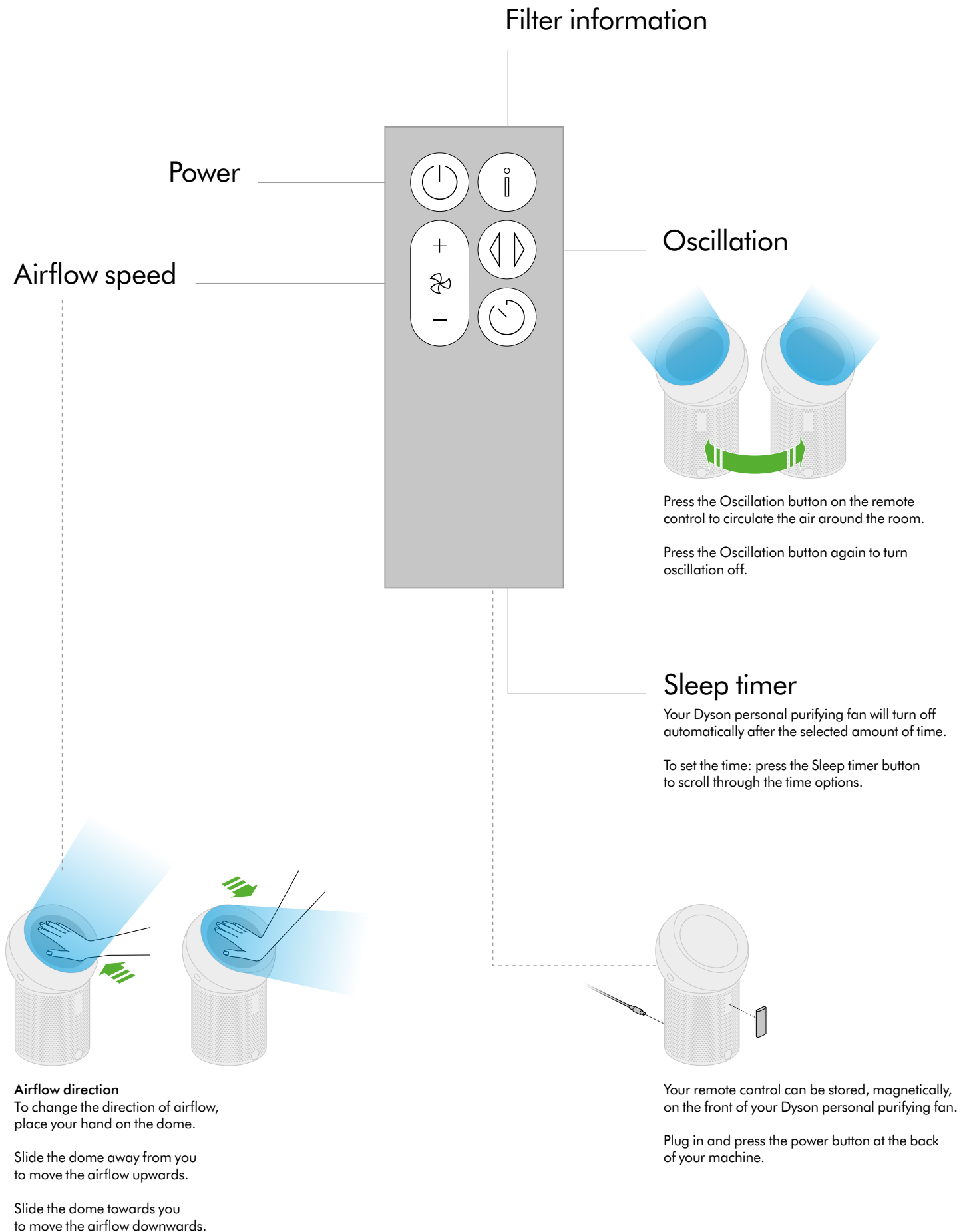
Get tips and guides

Learn about Dyson technology and other Dyson machines

Dyson customer care

If you have a question about your Dyson personal purifying fan, call the Dyson Helpline with your serial number and details of where and when you bought the machine, or contact us through the Dyson website.

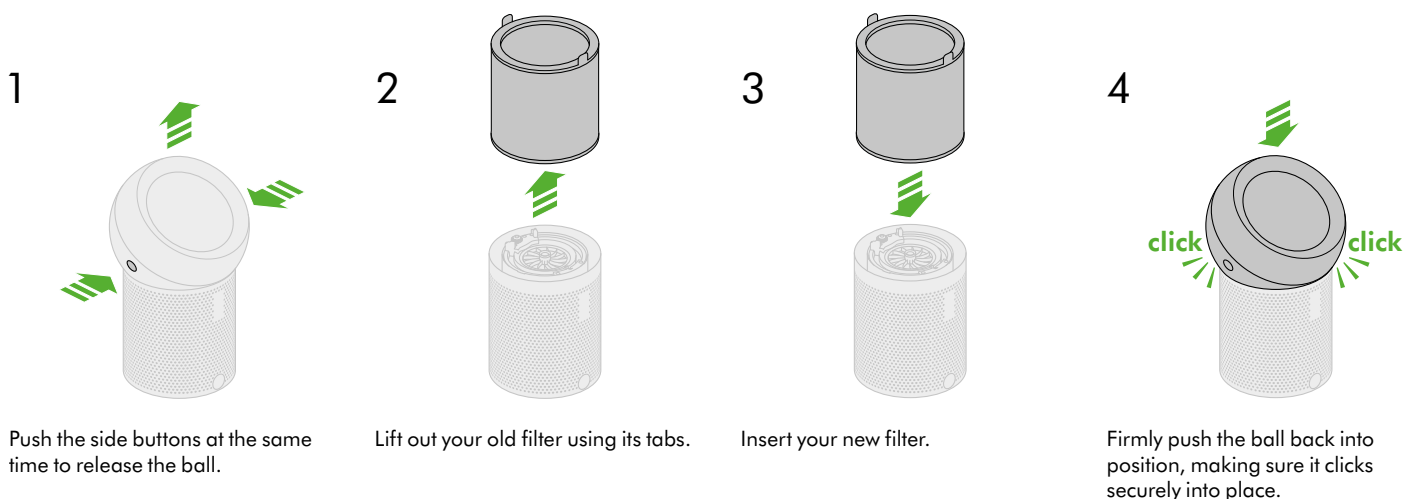
Getting started



Changing your filter

To always get the best performance from your Dyson personal purifying fan, it is important to regularly clean it and check for blockages.

Do not use your machine without the filter in place.



Looking after your machine

To always get the best performance from your Dyson personal purifying fan, it is important to regularly clean it and check for blockages.



Cleaning your Dyson personal purifying fan

Regular clean

Brush the outside of your machine with a soft brush to remove any debris from the mesh.

Use a soft, dry, lint-free cloth to clean the ball and dome.

Deep clean

When changing your filter, give your machine a thorough clean.

With the filter removed, use a Dyson's Flexi crevice tool (or long-handled, clean, paintbrush) to remove any debris from the base of the machine.

Error codes

If your machine shows an error code, try turning it off and then on again. If this does not clear the error code contact Dyson Customer Care.