

# dyson airwrap

## User manual



SV12 JN.00000 PN.000000-00-00  
00.00.00 VERSION NO.01

---

In the box

Getting started

Using your attachments

Pre-styling

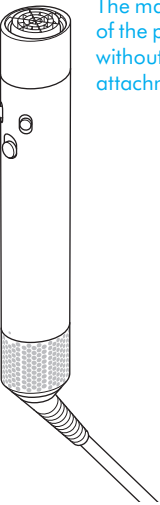
Curling

Shaping

Smoothing

Regular filter maintenance

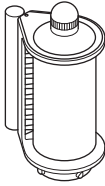
# In the box



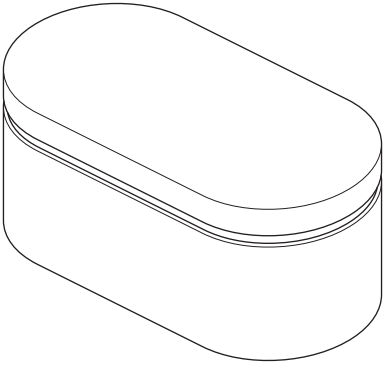
The main body of the product without any attachments.

Dyson Airwrap™ multi-styler main body

A flat, hook shaped nozzle.

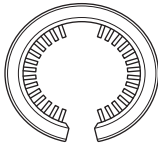


Coanda smoothing dryer



Storage case

A cylindrical tool that fits on to the bottom of the Dyson airwrap styler.



Filter cleaning brush

Some attachments may not be included.

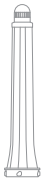
You can buy additional attachments at [www.dysoncanada.ca/en/your-dyson](http://www.dysoncanada.ca/en/your-dyson)



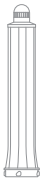
30mm Airwrap™ barrel



40mm Airwrap™ barrel



20mm Airwrap™ barrel



30mm Airwrap™ long barrel



40mm Airwrap™ long barrel



Soft smoothing brush



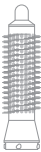
Firm smoothing brush



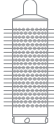
Small soft smoothing brush



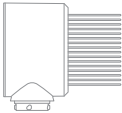
Small firm smoothing brush



Small round volumizing brush



Round volumizing brush



Wide-tooth comb

# Getting started



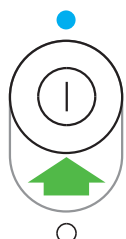
**Temperature control**  
2 heat settings plus  
a cold setting  
to finish your style.

The temperature control  
button is located on the  
back, right hand side of  
the handle.



**Airflow control**  
3 airflow speeds.

The airflow control  
button is located  
on the back, left  
hand side of the  
handle.

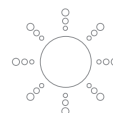
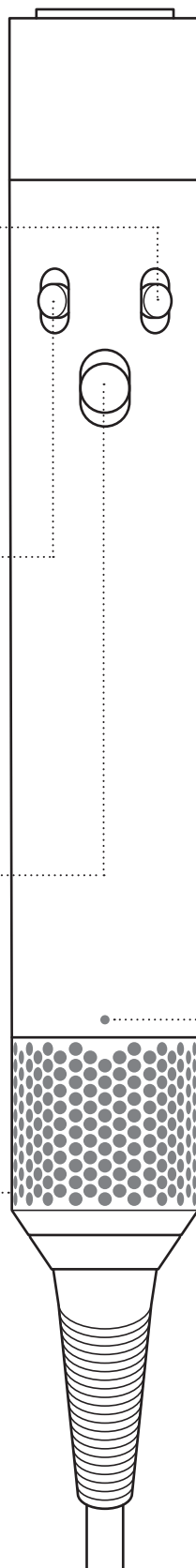


**Power on/off  
with cold shot**  
Sliding switch with  
cold shot to set  
your style.

The power button is  
located in the middle of the  
handle. It is a slider button  
that pushes upwards and  
downwards.

**Removable filter cage**  
Easy to remove for cleaning  
(see the 'Regular filter  
maintenance' section  
for details).

The filter cage is  
located at the bottom  
of the handle.



**LED**  
Clean the filter.  
See the 'Regular filter  
maintenance'  
section for details.

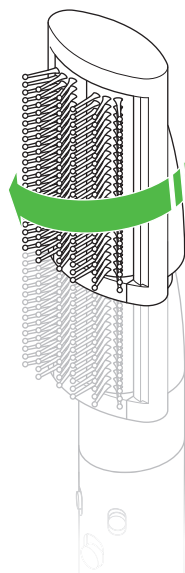
If the red LED lights,  
and the filter has already  
been cleaned, contact  
the Dyson Helpline.

The LED lights are  
located at the bottom  
of the handle above the  
filter cage.

# Using your attachments

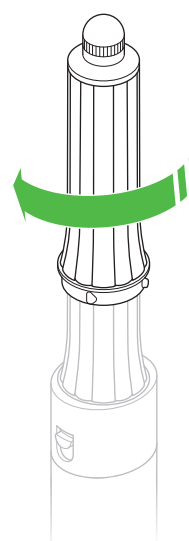
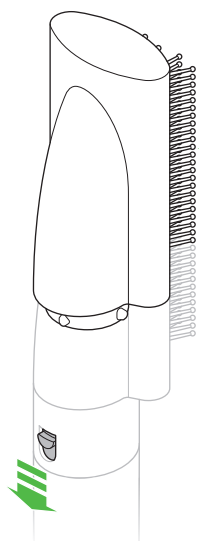
## Connecting the attachment

Turn attachment into the main body until it fits securely.



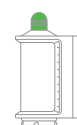
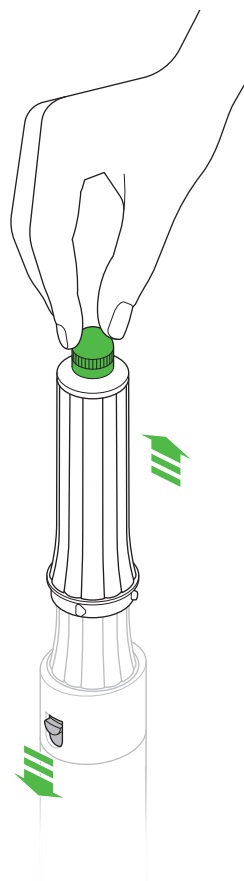
## Changing attachments

To change attachment, pull down on the switch to release.

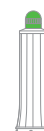


## Cool touch tip

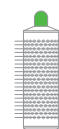
During use, the Airwrap™ barrels, Round volumizing brush and Coanda smoothing dryer will get hot. To change to another attachment, hold the tip.



Coanda smoothing dryer



Airwrap™ barrel



Round volumizing brush

## Take care when handling hot attachments

Hold the attachment only in the area indicated.  
Some attachments may need occasional cleaning.

For more information, go to [www.dysoncanada.ca/en/your-dyson](http://www.dysoncanada.ca/en/your-dyson)



# Pre-styling

## Coanda smoothing dryer

Before curling, pre-dry the hair until almost dry.

Comes with two modes (i) drying (ii) smoothing.

Use the cool tip to switch between the two modes.

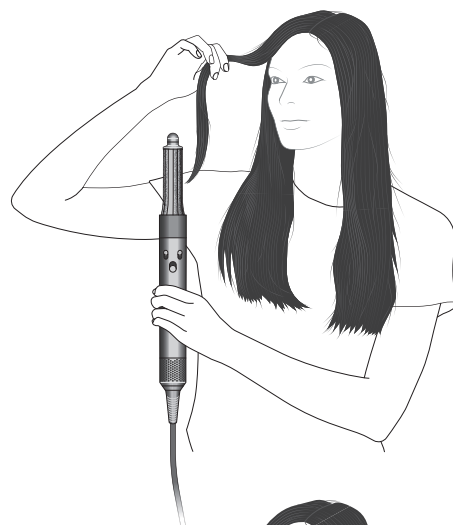


# Curling

## Barrels

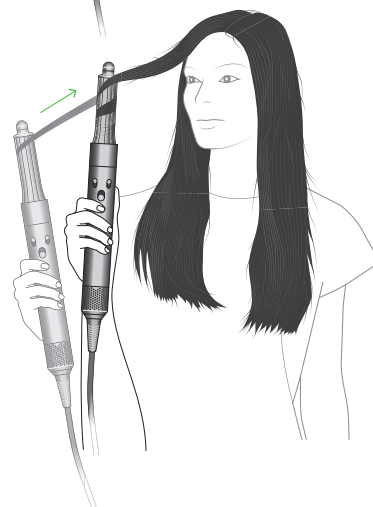
### Step 1

Take a section of hair and bring barrel towards tips.  
Hair will start to wrap around barrel.



### Step 2

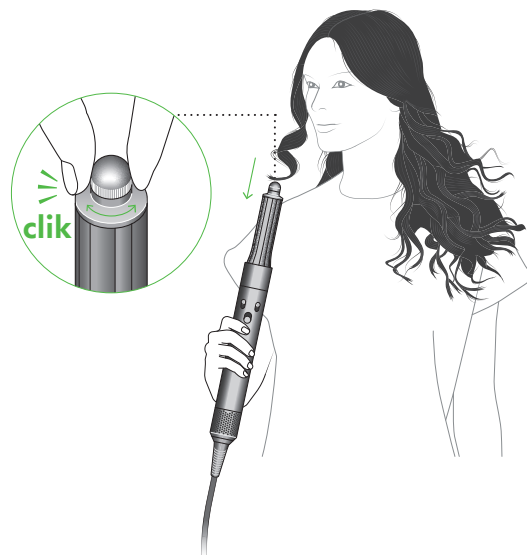
Move styler towards head, no need to twist. Hold for 15 seconds or until dry.



### Step 3

Press cold shot for 5-10 seconds to set curl. Switch off to release.

To change curl direction, rotate the cool tip.



# Shaping

## Smoothing brushes

### Step 1

Rough-dry hair with Coanda smoothing dryer.

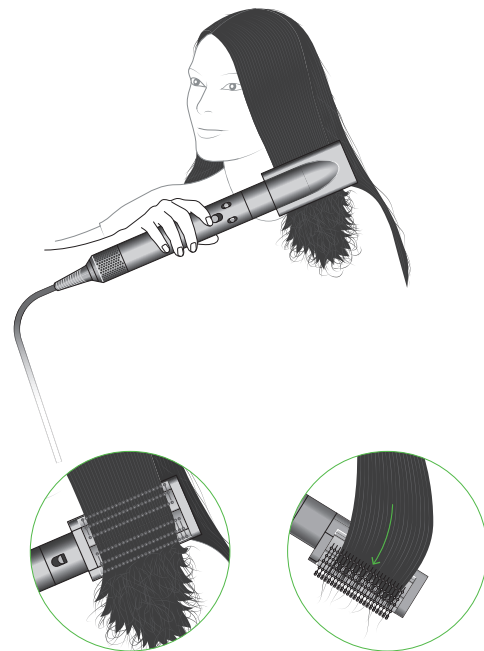
### Step 2

Use Smoothing brush to brush from root to tip.

#### Tips:

For volume, face bristles outwards.

Turn brush inwards at the ends to create shape.

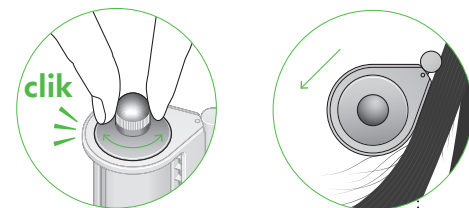


# Smoothing

## Coanda smoothing dryer

Rotate cool tip to select Smoothing mode.

Press against hair to switch airflow direction.



### Step 3

Use on dry hair to hide flyaways.

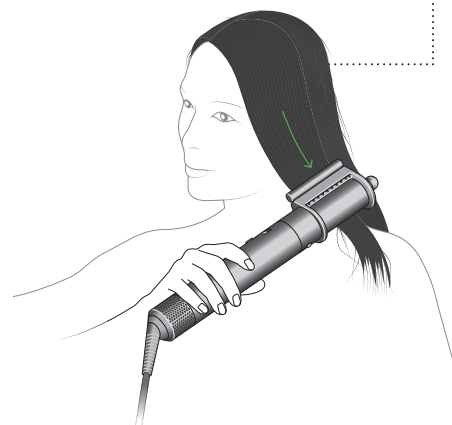
Position against hair until it attracts then slowly run down to tips.

For use on dry and straight hair.

#### How to use the contact bar

Position contact bar against the head until you hear a click and hair attracts.

Run from root to tip to hide flyaways.



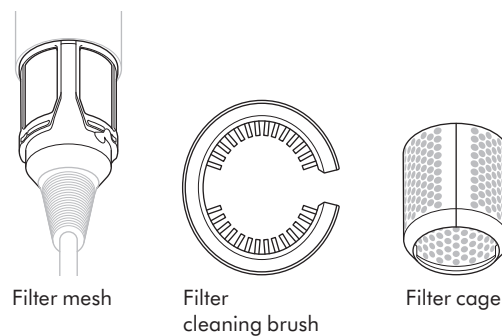
# Regular filter maintenance

The filter must be cleaned when the white LED starts flashing.

Ensure that you unplug your appliance from the mains electricity supply and allow to cool down before cleaning your filter.

The Dyson Airwrap™ multi-styler has highly tuned technology to give outstanding performance.

This technology needs to be kept free from dust and hair product residue. Maintenance is required to maintain performance.

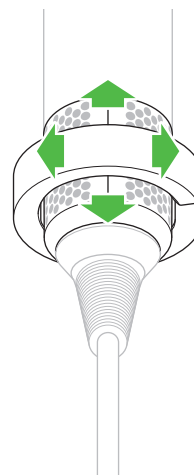


## Step 1

Slide the filter cleaning brush over the cable and onto the filter cage.

Using a rotating action, clean the filter cage thoroughly.

Remove the filter cleaning brush.



Slide the filter brush onto the filter cage and rotate to clean the filter cage.

## Step 2

Hold the handle of your appliance and pull the filter cage downwards, onto the cable.

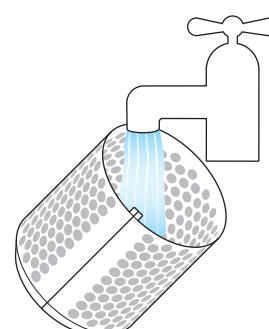
Gently pull open the filter cage and slide it off the cable.



Gently pull the filter cage downwards towards the cable.

## Step 3

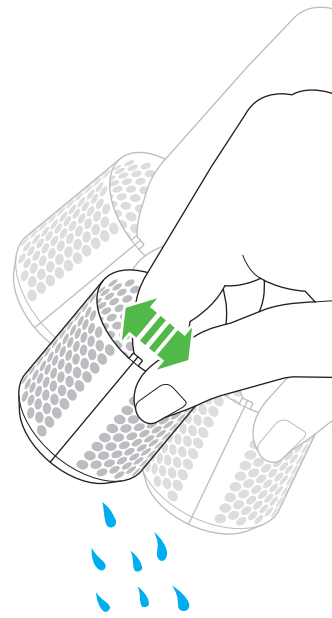
Wash the filter cage under a warm, running tap.



Wash the filter cage under the tap.

#### Step 4

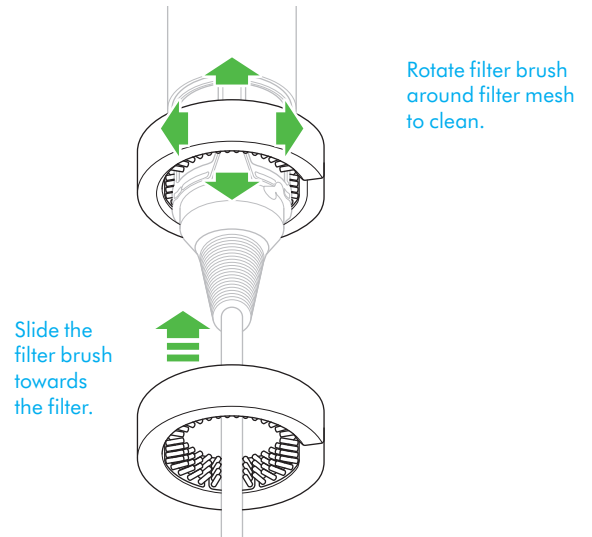
Shake the filter cage to remove the majority of the excess water, then leave to dry naturally.



#### Step 5

Using a rotating and up and down action, clean the filter mesh with the filter cleaning brush until all the debris has been removed.

Do not use water or chemicals to clean the filter mesh.



#### Step 6

Gently pull the filter cage open and slide it onto the cable.

Slide the filter cage towards the handle and twist until it snaps into place.

